

Tilt & slide patio door Rustic IV 78

U_w-Value
≥ 0.87



- Offset design
- 78 mm construction depth
- Available with triple glazing

Energy saving through new windows

| | |
|---------------------------------|---------------------------|
| U _w value (old) | 3.50 W/(m ² K) |
| U _w value (new) | 0.87 W/(m ² K) |
| Window area | 30 m ² |
| Annual fuel oil savings | 1070 litres |
| Annual carbon dioxide reduction | 2,890 kg |

Explanation

| | |
|---|--------|
| Heating degree days | 4,050 |
| Conversion factor kilogram into litres of heating oil | 1.19 |
| Conversion of calorific value Wh/kg | 11,800 |
| Heating efficiency | 0.75 |

SAFETY EQUIPMENT / FITTING

BASIS:

- Fitting with 3 locking plates
- 3-dimensionally adjustable
- Malfunction lock
- Max. sash weight 130 kg

OPTIONAL:

- Safety levels: RC1, RC2, according to EN 1627-1630
- High Control (magnetic contact for electronic monitoring)
- Sash cover profile (only for CLASSIC - profiling)
- Integrated door lock, lockable from inside and outside
- Lock monitoring according to VDI

WOOD COLOURS

- All wood colours listed in the shop as well as wood RAL colours
- Environmentally friendly water-based varnishes

SOUND INSULATION

Tested to
R_w(C; C_{tr}) = 45 (-1, -4) dB

GLASS THICKNESS

From 28 mm to 42 mm
(from 38 mm rebated glass strips; glass thickness 39 mm, 40 mm, not possible in rustic glass retainer strip)

SEALS

- Centre sealing system
- 3 sealing levels

SYSTEM VALUES

- Air permeability: Class 3 (according to EN 12207)
- Driving rain-proof: Class 4A (according to EN 12208)
- Water tightness against driving rain:
Class C3/B3 (according to EN 12210)

Please note:

The classes given here are minimum classes. For higher requirements please consult us.

THERMAL INSULATION

- Reference size 1230 x 1480 mm
- Minimum requirement according to GEG2020 $U_w = 1.3 \text{ W}/(\text{m}^2\text{K})$

Spruce

U_w window (W/m²K)

| U_g Glass according to EN 673 | Frame U_f value | Window U_w value Type of edge spacer alu | Window U_w value Type of edge spacer KSD |
|---------------------------------|-------------------|--|--|
| 1.1 | 1.1 | 1.3 | 1.2 |
| 1.0 | 1.1 | 1.2 | 1.1 |
| 0.7 | 1.1 | 1.0 | 0.9 (0.93) |
| 0.6 | 1.1 | 1.0 (0.95) | 0.9 (0.87) |

Pine, Larch, Meranti

U_w window (W/m²K)

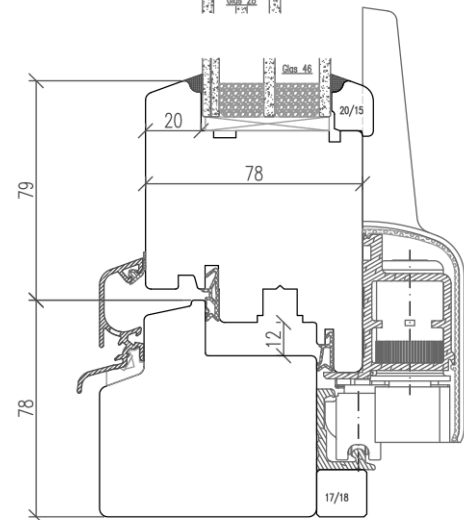
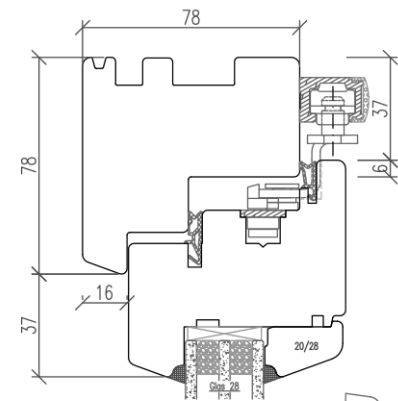
| U_g Glass according to EN 673 | Frame U_f value | Window U_w value Type of edge spacer alu | Window U_w value Type of edge spacer KSD |
|---------------------------------|-------------------|--|--|
| 1.1 | 1.2 | 1.3 | 1.2 |
| 1.0 | 1.2 | 1.2 | 1.2 |
| 0.7 | 1.2 | 1.1 | 1.0 (0.97) |
| 0.6 | 1.2 | 1.0 (0.99) | 0.9 (0.91) |

Oak, Eucalyptus

U_w window (W/m²K)

| U_g Glass according to EN 673 | Frame U_f value | Window U_w value Type of edge spacer alu | Window U_w value Type of edge spacer KSD |
|---------------------------------|-------------------|--|--|
| 1.1 | 1.5 | 1.4 | 1.3 |
| 1.0 | 1.5 | 1.3 | 1.2 |
| 0.7 | 1.5 | 1.2 | 1.1 |
| 0.6 | 1.5 | 1.1 | 1.0 |

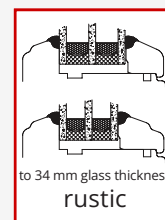
U_w values > 1.0 W/(m²K) are shown with one decimal place according to EN ISO 10077, here with two decimal places for information purposes



IV 78 WOOD VERTICAL SECTION

POSSIBLE GLASS STRIPS:

STANDARD



OPTIONAL

